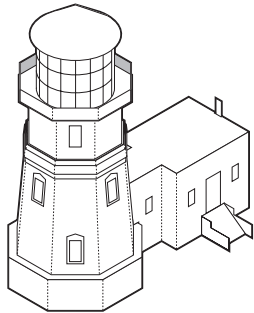


Split Rock Lighthouse

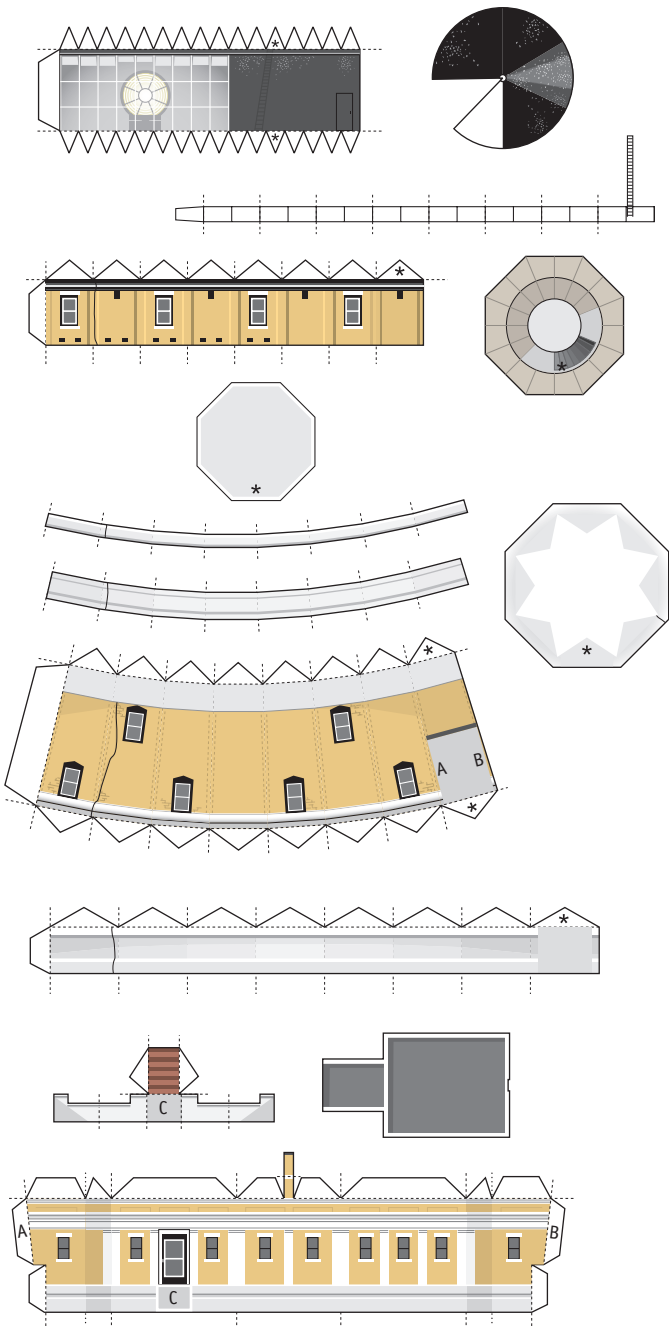
complete scale model

Overlooking Lake Superior's rocky North Shore near Two Harbors, Minnesota

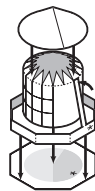


After a violent November gale in 1905 wrecked 30 boats and cost over 200 lives on Lake Superior, Congress approved construction of this beacon atop a 130-foot cliff to guide ships along the rugged and desolate shoreline. The lighthouse and its connected office building and a separate foghorn building were finished in 1910, immediately benefiting Great Lakes shipping. A clamshell-shaped second-order Fresnel lens floating on a bed of mercury projected a beam of light up to 22 miles in clear weather, flashing once every 10 seconds.

For many years Split Rock was accessible only by boat, but completion of the North Shore Highway in 1924 brought tourists by the thousands. The lighthouse was decommissioned in 1969 and acquired by the Minnesota Historical Society in 1971. It is now a well loved point of pilgrimage to travelers along the North Shore.

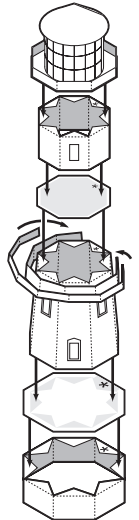


1



Roll the lantern into a cylinder and glue it to the octagonal balcony, aligning the star on the balcony with the star on the bottom of the lantern. The windows will line up with the shaded area on the balcony. Then add the railing piece. Again, align the tab with the star with the star on the cylinder so that the ladder leans in to touch the top of the lantern. Then roll the rooftop into a cone and glue it atop the lantern.

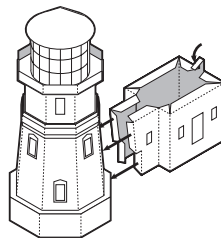
2



Starting at the bottom of the tower, fold the base into an octagonal cylinder. Glue the octagonal platform on top, aligning the star on the tab with the star on the base. Next the tapering part of the tower and its octagonal top.

Wrap the two strips of the cornice around the tapered section. Glue the wider strip first and then the narrow. Then add the upper section of the tower. Finally add the lantern and balcony on top to finish the tower. Line up the ladder on the balcony with the back of the tower.

3



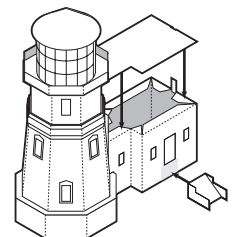
Cut out the small office building and fold into shape. Fold and glue the chimney down.

Then add the office building to the back of the tower as indicated by A and B. Make sure the building sits flat and level before the glue sets.



4

Cut out the stairs. Fold the railings in and back, then fold the stairs down between the railings. Glue the stairs in place and then add the roof. Your Split Rock Lighthouse is complete!



Wurlington Bros Press
www.BuildYourOwnChicago.com

©Matt Bergstrom