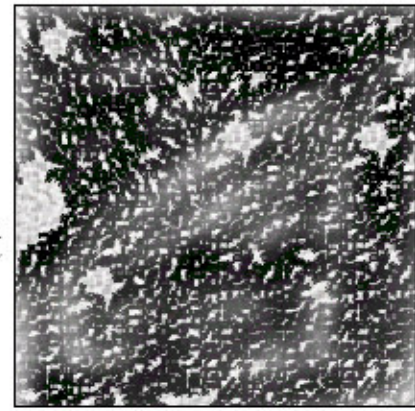
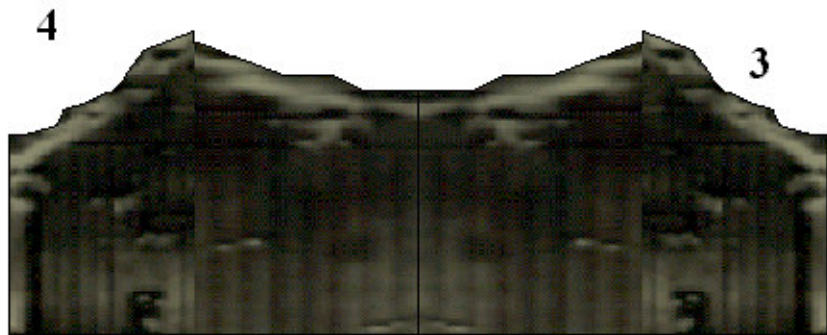




Insert for 4



Floor Insert



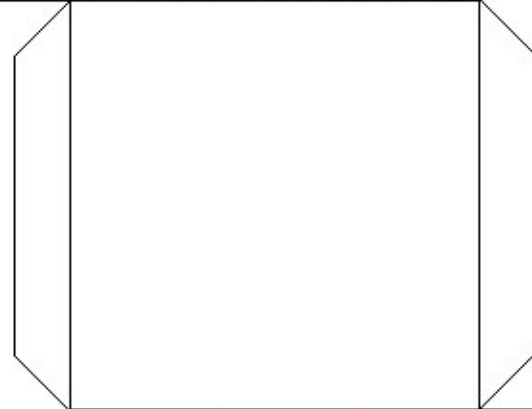
4

3

Insert for 3



* It's a good idea to mark the back sides of the inserts and walls with their correct number, it will help to match them up when are ready to glue.



1

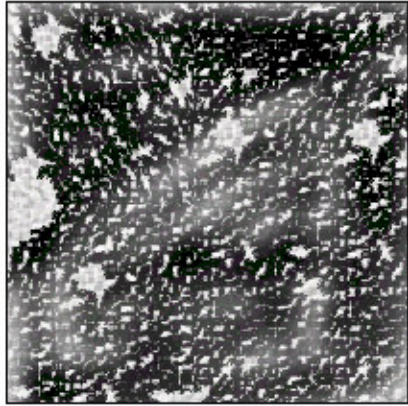
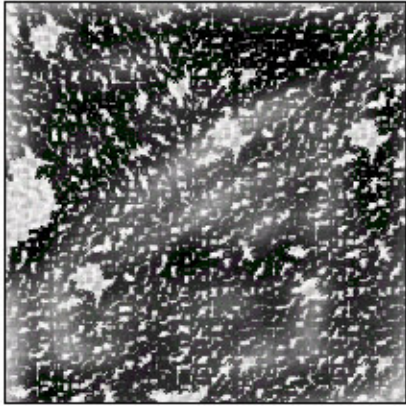
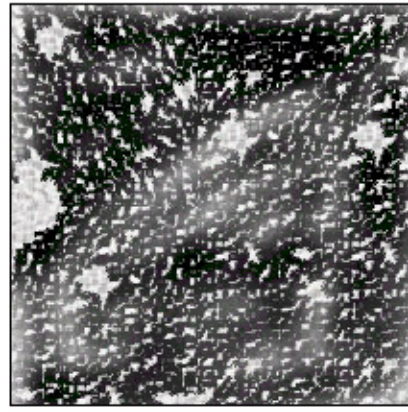
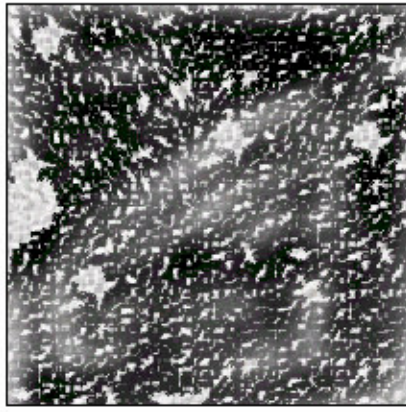
Insert for 2

Insert for 1



Floor Insert plus extra inserts

Floor Insert



Insert for 4



Insert for 3



Insert for 1



Insert for 2

